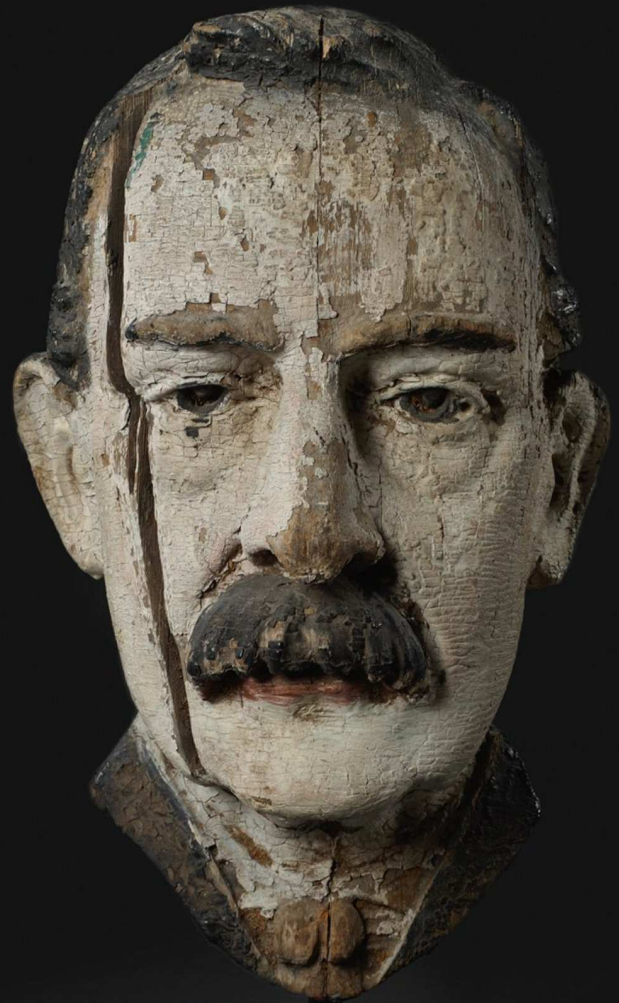


Icons of Folk Art



Just Folk Gallery



Copyright@2015 Just Folk

All rights reserved. No part of this book may be reproduced in any form by any electronic or mechanical means (including photocopying, recording or information storage and retrieval) without permission in writing from publisher.

Credits:

Creative Director: Kathleen Ousley

Just Folk Team: Susan Baerwald, Marcy Carsey,
Deirdre Gerry, Kathleen Ousley and Fernando Giron.

Just Folk

2346 Lillie Avenue P.O. Box 578

Summerland, CA 93067

805-969-7118

www.justfolk.com



The Blurb-provided layout designs and graphic elements are copyright Blurb Inc. This book was created using the Blurb creative publishing service. The book author retains sole copyright to his or her contributions to this book.



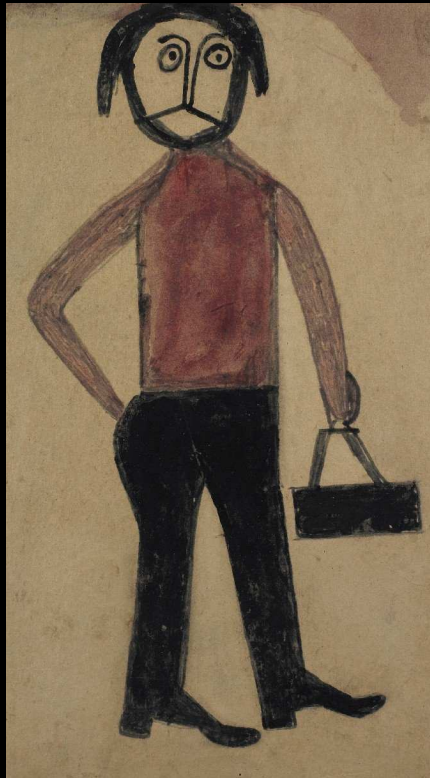
Bill Traylor



Bill Traylor (1854-1947)
Black Bear Circa 1939-1942
Poster paint and graphite on cardboard.
11 1/4" x 15 1/4" unframed. See: Unfiltered, pg. 65
Provenance: Ricco/Maresca

Bill Traylor (1854-1947)
Woman Pointing Circa 1939-1942
Poster paint and graphite on cardboard.
14 1/2" x 11" unframed. See: Unfiltered, pg. 50
Provenance: Ricco/Maresca





Bill Traylor (1854-1947)
Mexican Man with Suitcase
 Circa 1939-1942
 Poster paint and graphite on cardboard.
 13 3/4" x 7 1/4" unframed.
 See: Unfiltered, pg. 51
 Provenance: Ricco/Maresca



Bill Traylor (1854-1947)
Man with Stick (Pipe)
 Circa 1939-1942
 Poster paint and graphite on cardboard.
 13 1/2" x 8" unframed.
 See: Unfiltered, pg. 24
 Provenance: Ricco/Maresca



Bill Traylor (1854-1947)

Owl

Circa 1939-1942

**Poster paint and graphite on
cardboard.**

9" x 7" unframed.

See: Unfiltered, pg. 41

Provenance: Ricco/Maresca



Bill Traylor (1854-1947)
Black Pig with Blue Eyes
Circa 1939-42 Poster paint on found cardboard.
11.75" x 11.75" unframed.
Provenance: Charles Shannon
to Hirschl & Adler to Karsten Greve
to Ricco/Maresca to Courtright/Bruno Romeda

Bee Man Whirligig
Circa 1900
Wood, tin, wire and original polychrome.
7" w x 22.5" h x 20" d
Ex Mendelsohn Collection





Ventriloquist Carnival Head
Late 19th century
Attributed to Roy Everingham,
Southern, New Jersey.
Assembled and
joined oak.
Traces of original
polychrome.
Mouth hinged for
opening and closing.
9"w x 15"h x 7"d
Ex Mendelsohn
Collection
See: American Vernacular,
pg. 85 for similar figure





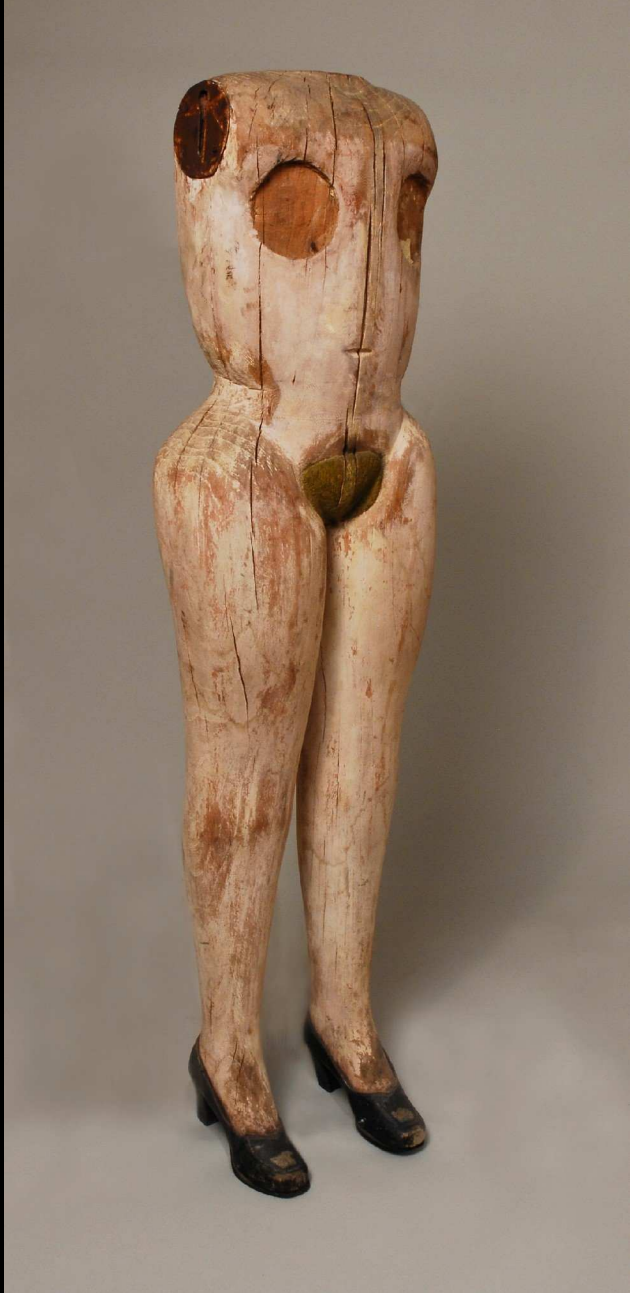
Clark Coe (1847-1919)
Circa 1900-1910
Head from the Killingsworth
"environment" of articulated
figures that were powered by a
water wheel in Killingsworth,
Connecticut. Wood with
polychrome, applied metal
ears. 7"w x 9.5" h x 7"d
Ex Mendelsohn Collection
See: American Primitive, pg.
93 and American Vernacular,
pg. 208





Male Mannequin
American
Circa 1900
Trade figure of a man with
articulated arms.
Carved spruce with remains
of original paint.
9" diameter of base, 63"h x 14"w
Ex Mendelsohn Collection





Mannequin
Circa 1940
Anonymous
Found in Midwest
Wood and polychrome. Life-sized.
12.5"w x 51" h x 12"d
Ex Mendelsohn Collection
See: American Primitive, pg. 23
and Intuitive Eye, pg. 78



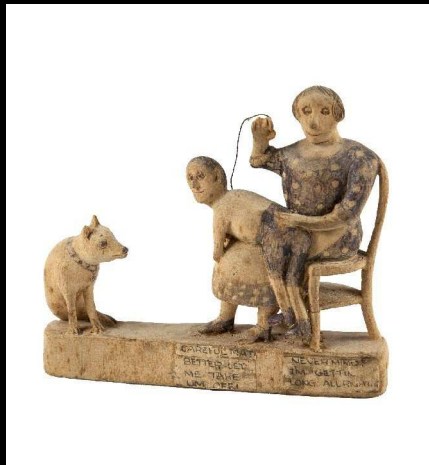
**Four Cloth Dolls
Mid 19th century
Unidentified maker**

**Cloth with glass beads, hair and yarn. Hand stitched faces.
4.5 " w x 11" h x 1.5" d Ex Briskin Collection See: Just Folk Briskin Family Collection, pg. 83**



**Carved Wood Figures and Animals
1880-1900
Pennsylvania
Set of three scenaria:**

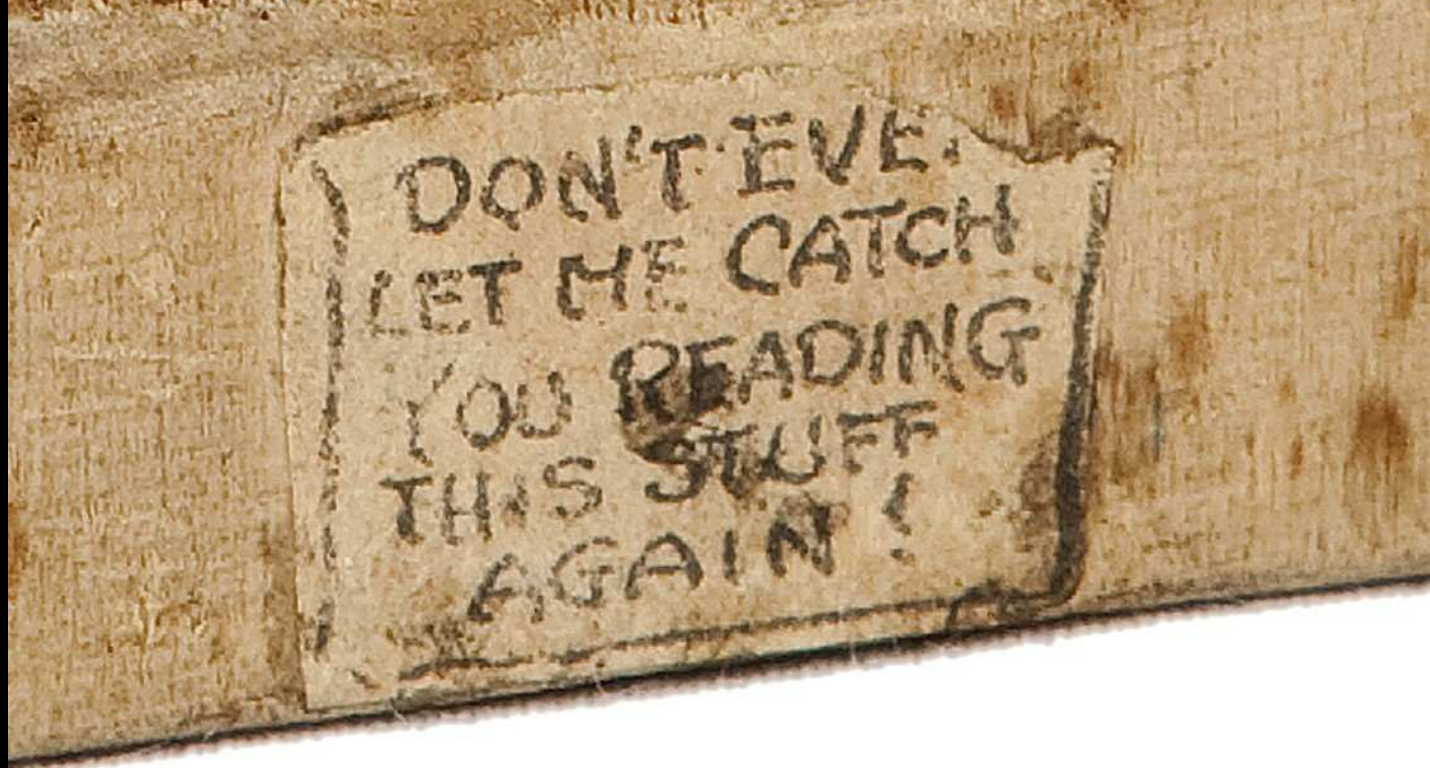
"A Good Man is Hard to Find"



**"Careful Man, Better Let Me
Take Um Off"**



**"Don't Ever Let Me Catch
You Reading This Stuff Again!"**

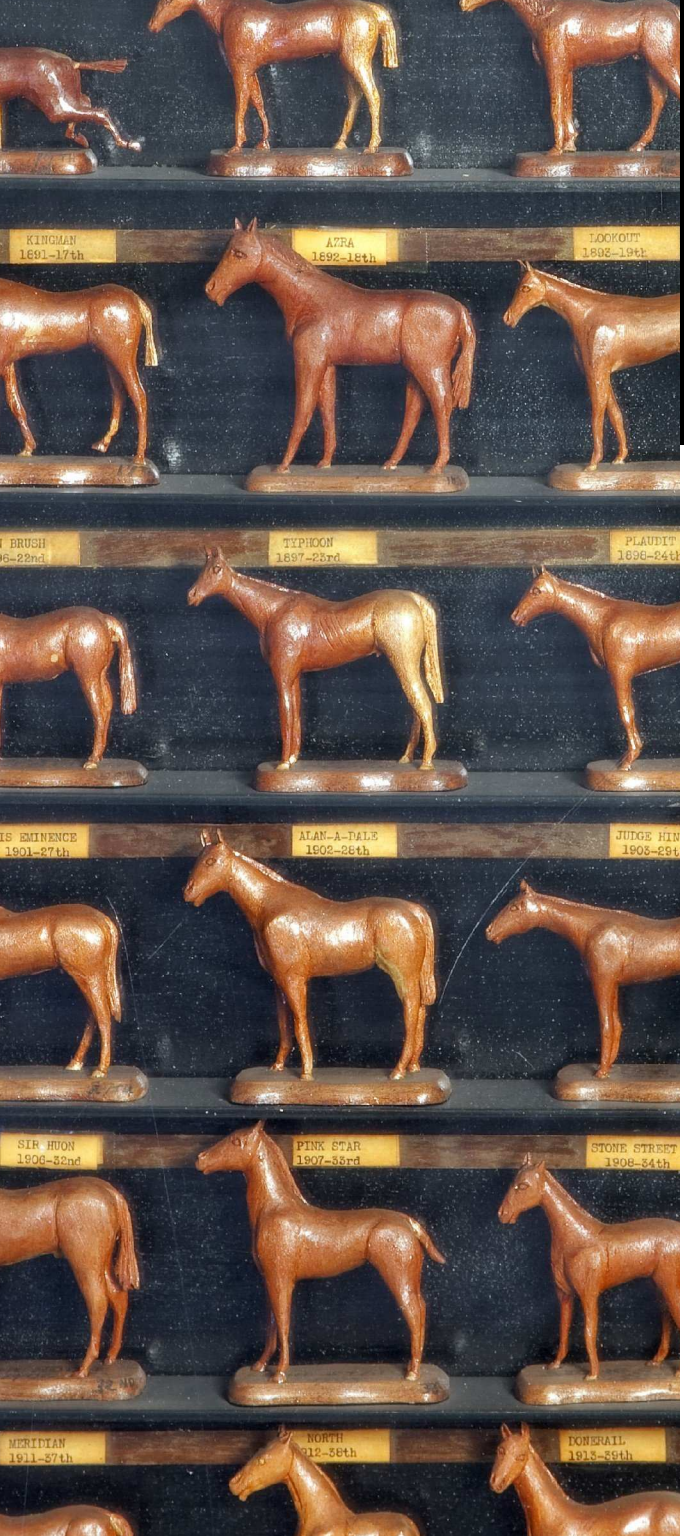


DON'T EVER
LET ME CATCH
YOU READING
THIS STUFF
AGAIN!



CAREFUL MAN
BETTER LET
ME TAKE
UM OFF!

NEVER MIND!
IM GETTIN
LONG ALL RIGHT.



**Carved Horse Diptych Shadow Box
Unidentified Maker**

Midwest Circa 1940-1950

**Each race horse carved in the likeness of the
year's Kentucky Derby winner. Original paint
and varnished wood. Hinged for tabletop display.**

40 1/4" w x 32" h x 3" d

Provenance: Ricco/Maresca





Portrait of a Singing Woman

Circa 1925-1930

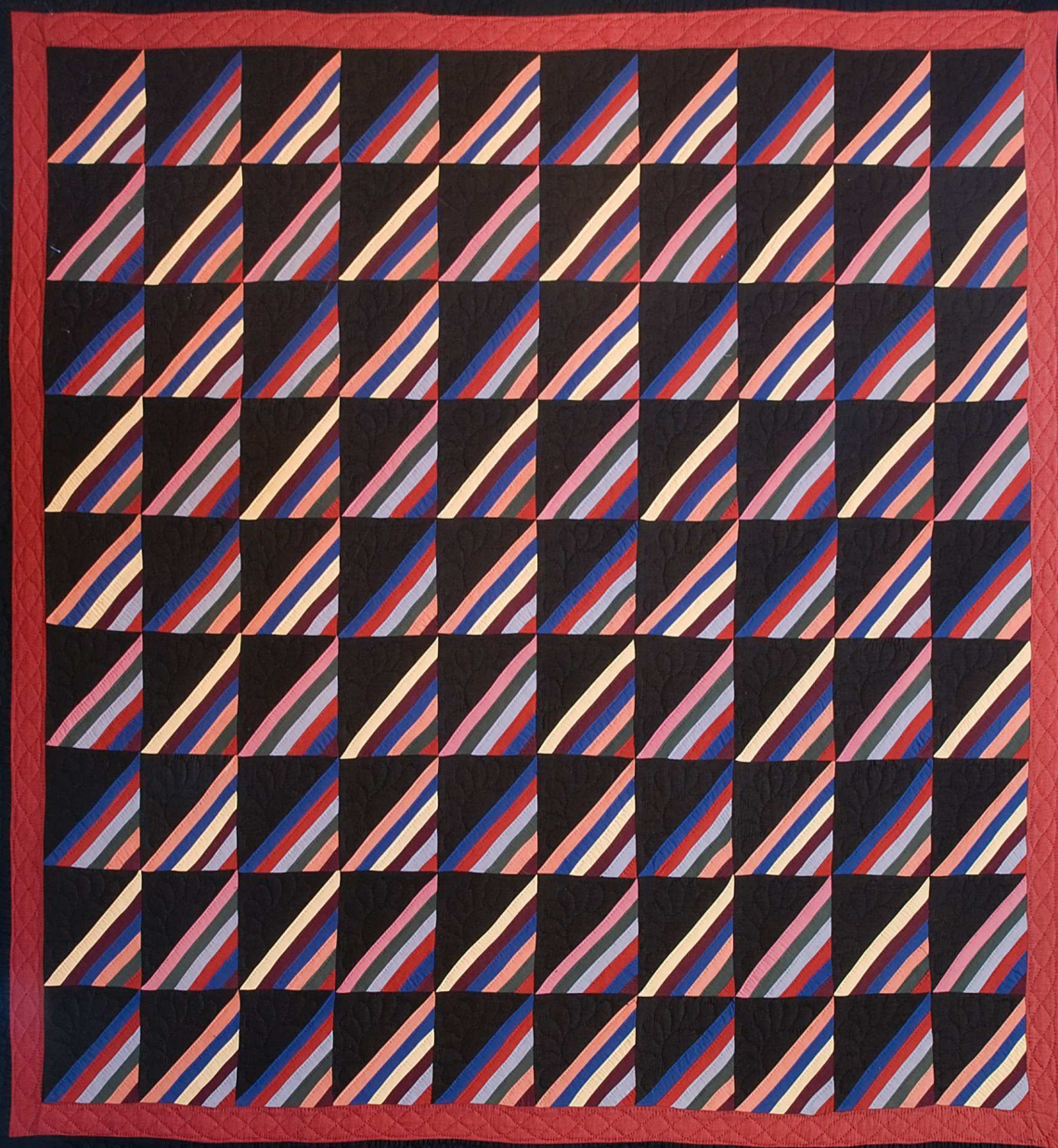
Wood and polychrome, hammered brass frame.

This relief carving of a woman singing once held a manually operated music box.

Signed; "Nick V.M." 16"w x 20" h x 2"d

Ex Mendelsohn Collection See: American Vernacular, pg. 151

**Amish Roman Stripes
Quilt**
Made by Mary Yoder
Circa 1930
Holmes County, Ohio
74" x 80"
mounted
Provenance:
Ricco -Johnson
Gallery 1985
Ex Jennifer and Denny
Crimmins Collection



Gameboard
Circa 1870 American
Eight by eight playing field,
comprised of
red and white squares divided
by gold pinstriping,
surrounded by a blue band and
embellished with gold stars. Entire
wood board enclosed in applied
raised frame. Constructed with
square nails.
Completely original condition
with expected
wear and oxidation.
15" x 15" x 2"





Early Fairground Target Game Board
English Circa 1930
Hand painted wood and metal. 41" h x 39.5" w
Provenance: Robert Young

Architectural Plaques
Circa 1875 Wood and polychrome
Unusual pair of carved and painted plaques
used originally as interior architectural
ornaments. One figure is African American
with large hand. Other is a
white male with truncated torso
6.5"w x 27"h x 3"d
Ex Mendelsohn Collection



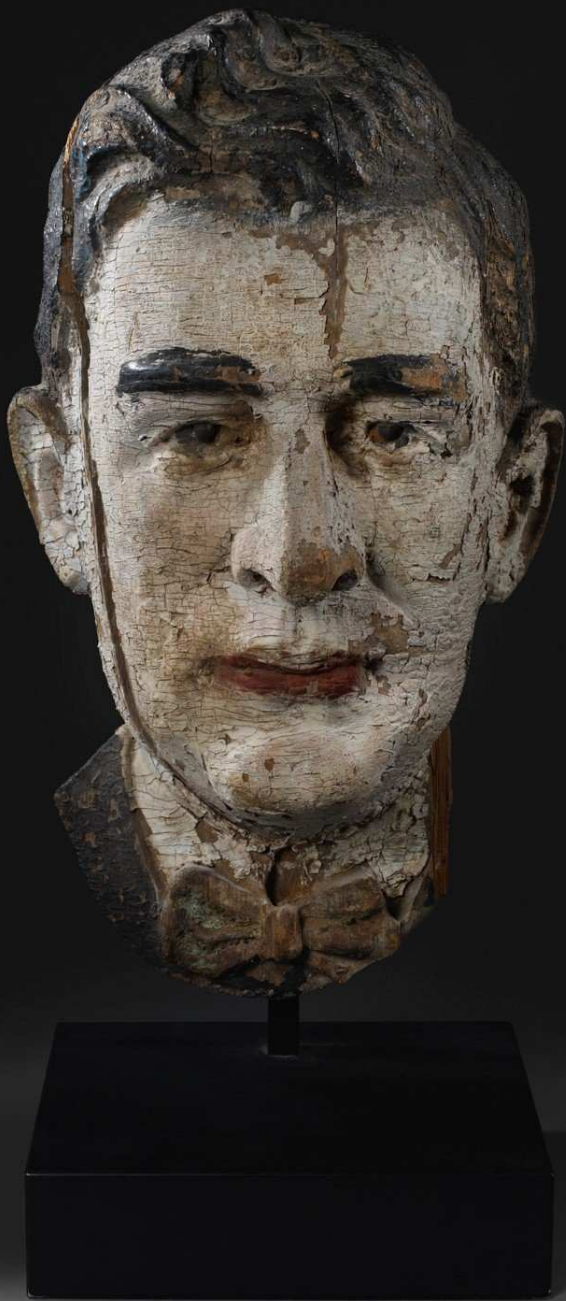


Horse with White Fetlocks
Late 19th century - Early 20th century
Wood with polychrome, horsehair and iron horseshoes.
32"h x 35"l Ex Edie Briskin Collection See: American Primitive, pg. 205

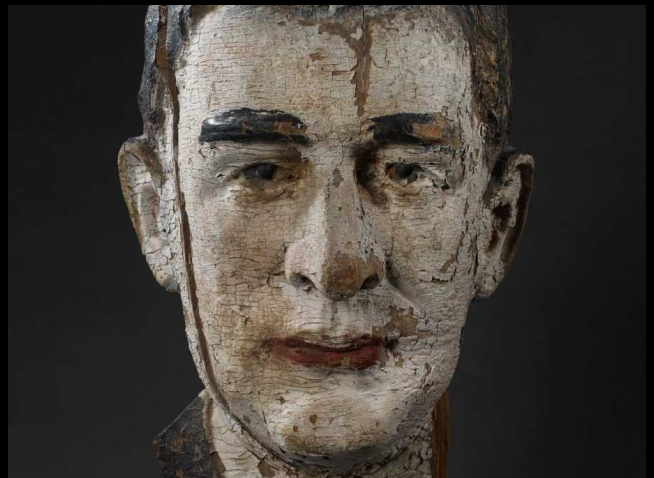


Index Horse Weathervane
19th century Rare small size
Molded copper and zinc. Attributed to J. Howard & Co. Bridgewater, MA
18"w x 15"h x 3"d Provenance: Christies





**Heads of Four Men
Anonymous Circa 1875
Pine with Polychrome.
Thought to be portraits of the founders
of a corporation
in Albany, New York.
Weathering suggests that they were
mounted under a gable in front
of a building.
22"h x 10.5"w x 10.5"d
Ex William Greenspon / Ex Barry Briskin Collection
See: American Primitive, pg. 79**





George Smart of Frant
English Circa 1835
" Old Bright "
Paper and fabric collage
within original frame.
11.5"w x 13.5" h
Provenance: Robert Young



George Smart of Frant
English Circa 1835
" Goosewoman "
Paper and fabric collage
within original frame.
11.5"w x 13.5"h
Provenance: Robert Young



Banner Weathervane
Circa 1840-1860
Whitehall, New York
Forged Iron with black paint
and gilding.
20"w x 60 5/8"h x 2"d
Ex Edie Briskin Collection
See: American Vernacular,
pg. 288



Tobacconist Figure
Circa 1920-30
Wood with polychrome.
45.75"h Base 12"w
Ex Edie Briskin Collection
See: American Primitive,
pg. 27

**Pair of Monumental
Whirligigs
Circa 1880
Wood and polychrome.
22.25"w x 38"h x 6"d
Ex Edie Briskin Collection
See: American Vernacular,
pgs. 292-293**







Group of Seven Civil War Articulated Figures and Two Horse Fragments
Unidentified Maker Mid 19th century Wood and polychrome with metal and cloth.
2"h-13"h Ex Marvill Collection See: American Vernacular, pg. 137





**Hooked Rug with Two
Girls and Cherries
Late 19th century -
Early 20th century
Embroidery and
intricate stitching in
Waldoboro Style;
a unique three
dimensional hooking
technique.**

**37"w x 23.5"h x 2"d
Ex Briskin Collection
See: Just Folk Briskin
Family Collection,
pg.15**



Dog Reclining
Mid-19th century
Slate
7"w x 6"h x 11"l



Boy in Box
Georgia
Circa 1900
Pine and composite with polychrome.
Sliding lid.
4"w x 8"h x 2" d
See: American Vernacular, pg. 148



Topsy Turvy Doll Circa 1900 Unidentified maker
Carved wood, polychrome and fabric.



Doll originally wore a skirt to conceal each head when it was upended. 16" x 5" x 3" Ex Mendelsohn Collection



Featured on cover of American Primitive. See: American Vernacular, pg. 124 and Intuitive Eye, pg. 66

Woman Holding Celestial Globe Aloft

Circa 1920-30

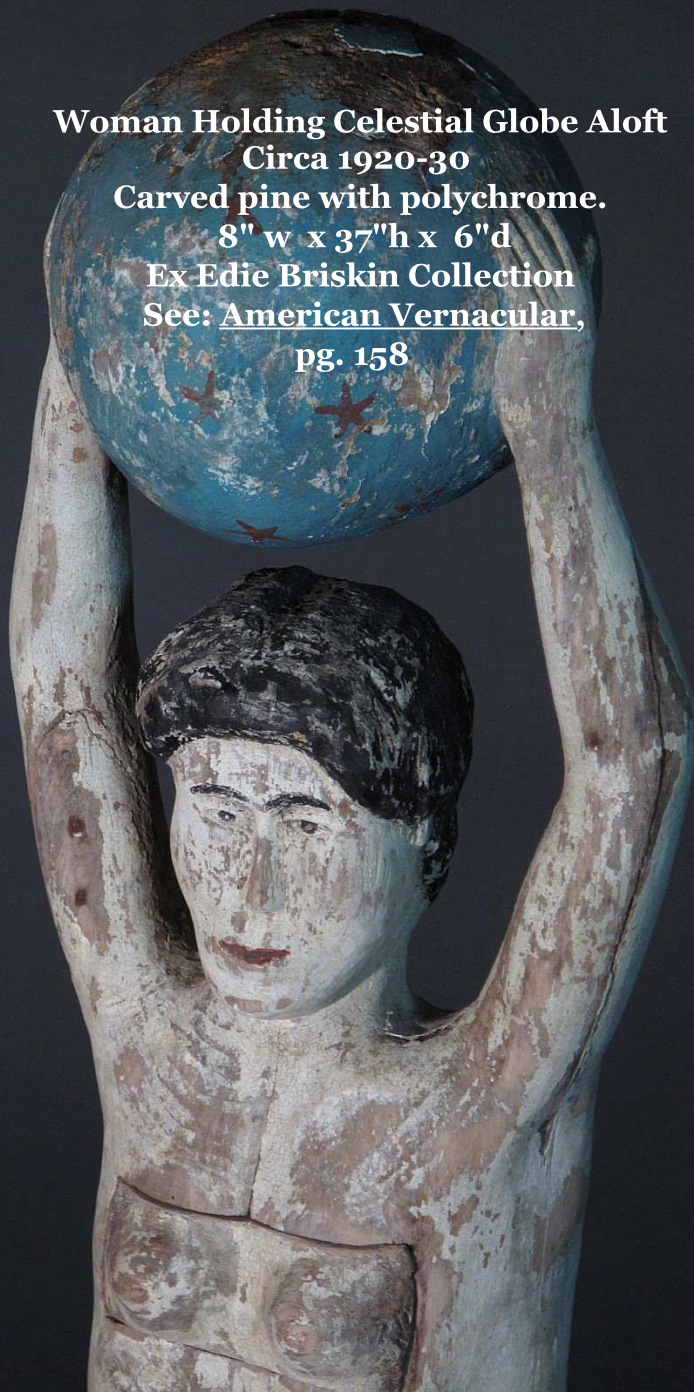
Carved pine with polychrome.

8" w x 37" h x 6" d

Ex Edie Briskin Collection

See: American Vernacular,

pg. 158





**Pair of Whirligigs
Late 19th century
Ex Museum Collection
Ottawa, Kansas
One, a Civil War soldier,
the other, a Police Officer.
Each with alternate hats.
7" w x 22"h x 20" d**





Photography Credits:

Just Folk Gallery
Ricco/Maresca Gallery
Robert Young Gallery
Frank Maresca
Edward Shoffstall
Ted Rhodes
Richard Goodbody
Mario Bettella
Ralph Starkweather
Ellen Mc Dermott



Selected Sources:

Unfiltered-Bill Traylor

copyright, 2009 Just Folk Gallery

The Briskin Family Collection

copyright, 2008 Just Folk Gallery

Bill Traylor Postcard Book

copyright, 2014 Just Folk Gallery

American Primitive-Discoveries in Folk Sculpture

Roger Ricco/Frank Maresca with Julia Weissman

Alfred Knopf, New York, 1988

American Vernacular-New Discoveries In Folk, Self-Taught and Outsider Sculpture

Frank Maresca/Roger Ricco

A Bulfinch Press Book Little, Brown and Company, Boston, New York and London

The Intuitive Eye

The Mendelsohn Collection

Ricco/Maresca Gallery, 2000



